



**Product  
Catalogue**

**MARKET LEADING  
WELD CLEANERS.  
QUALITY CONSUMABLES.  
SUPERIOR RESULTS.**



EASYkleen is the leading manufacturer of post weld finishing machines (weld cleaners). We have for over a decade manufactured stainless steel weld cleaners and their associated products to provide fabricators in all industries a fast, safe and reliable option. We manufacture a range of weld cleaning machines which means there is option for every fabricator. From the fabrication shop who only works in sheet metal, up to the company who exclusively MIG welds, we have a machine to suit you. With a third of our Australian based factory space dedicated to R & D, EASYkleen has produced many market firsts in its time and continues to be at the cutting edge of weld cleaning technology now and into the future. As we are a manufacturer ourselves, we are acutely aware of the need for our products we produce to be reliable. This is why we offer an unmatched in our industry, 10-year internal parts warranty on our EASYkleen range of machines. This alone should provide any potential buyer the confidence in our brand that we have.

***FAST - Highest Powered Machines & Largest Brush Electrodes***  
***SAFE - Water Based Chemicals & Less Labour Intensive***  
***RELIABLE - 100% Duty Cycle & 10-year internal parts warranty***

## A focus on quality of finish

The EASYkleen range of weld cleaning machines are second to none when it comes to reliability and performance, but we also place a huge emphasis on the quality of finish our machines produce, which is why we have teamed up with Universities and Material Testing Houses to complete collaborative studies on our machines in comparison to alternative finishing methods such as AC output machines, abrasives and chemical removal.

All EASYkleen machines have a DC only output. This means these that these unit are exclusively using the process of electro-polishing when weld cleaning. This results in the highest possible corrosion resistant finish compared with all other post weld finishing methods.

The graph on the right is from a collaborative study with Sandvik Materials and shows the corrosion resistance of different finishing methods, as well as the parent material and as welded.

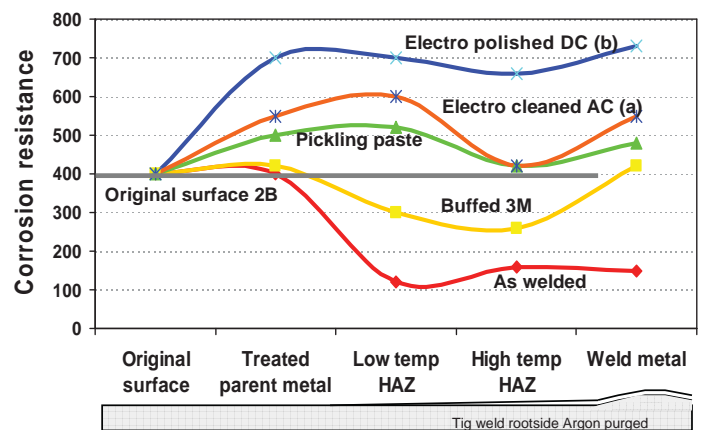
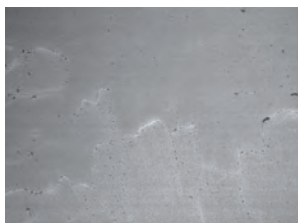


Figure 4. Effect of cleaning methods on a stainless steel weldment

### DC under the microscope - All EASYkleen machines

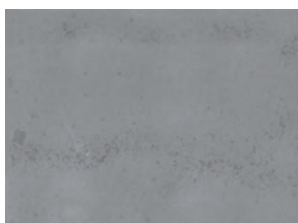


Before



After

### AC under the microscope - Competitor machines "clean" setting



Before



After

When considering quality of finish, we need to also think about the morphology (shape/structure) of the surface. For stainless steel, the smoother the surface is, the less contamination (dirt, oils, salts etc.) can adhere, which drastically inhibits bacteria growth and foreign particle entrapment. This gives maximum access to the oxygen required for a strong and continuous passive layer. Dramatically improving the corrosion resistance process.

The Scanning Electron Microscopy (SEM) images show samples of untreated welds and those welds treated, one with AC and one with DC. AC treated - Surface finish is very irregular which helps contaminants stick or attach to the surface, which increases the pitting potential (corrosion).

DC treated - This smoothing effect, whilst removing a very small amount of material also aids in removal of large grain boundaries which are usual susceptible to pitting (corrosion).

The conclusion is that of all post weld finishing methods tested, the use of a DC output weld cleaning machine, which uses the process of electro-polishing achieves the smoothest finish, will provide the best deterrent against pitting (corrosion).

For the full technical reports on any of our collaborative studies, please download them from our website - [www.easykleen.com.au](http://www.easykleen.com.au)

**Unrivalled Warranty**

---

# ***10-Year Internal Parts Warranty***



As a customer, you have the expectation that any EASYkleen machine you purchase should be built with quality parts and workmanship.

The EASYkleen machine you choose to purchase should also provide exceptional reliability now and for many years to come.

We believe that too, which is why EASYkleen firstly offers a 2-year general warranty. Additionally, we are proud to offer a 10-year internal parts warranty on the EASYkleen range of machines.

As we manufacture our products in house from start to finish, we are confident that our machines are built to last, so this additional parts only warranty is our way of standing by and supporting our products now and into the future.

Please go to [www.easykleen.com.au](http://www.easykleen.com.au) for full terms and conditions on this warranty offer, which is well over and above any of our competitors.



# EASYkleen TEC Brush

*A robust and reliable entry level weld cleaning machine*

- Lightweight and highly portable transformer driven weld cleaner
- 100% duty cycle, designed for light to medium use and is also generator safe
- Auto-sensing amperage output ranging from 20-60amps of available cleaning power
- Ideal for sheet metal work (1-6mm) but can be easily used on thicker material is the HAZ in minimal



## Specifications

Product Code	Input	Output	Range of Brushes	Compatible Solutions	Weight	Dimensions
EKT101	110v or 240v 50-60Hz	20-60 Amps	EKT105 - Express EKT106 - Rapid EKT140 - TIP-E	EKP102 - EKP-50 EKP103 - ECO-kleen EKP104 - All Machine MST129 - BLITz Clean Up	5.75kgs (16.7lbs)	29 x 18 x 22.5 (11.4" x 7" x 8.8")

# EASYkleen Plus Brush

*Our most popular model, ready to clean, all day, every day.*

- High powered DC only output using a patented waveform specifically designed for weld cleaning
- Will work on TIG, Stick and MIG welds to provide the highest possible corrosion resistance
- Fast and safer than traditional weld cleaning methods, whilst also being more economical too
- Extremely simple to operate and with five brushes in the range, every weld geometry is covered



## Specifications

Product Code	Input	Output	Range of Brushes	Compatible Solutions	Weight	Dimensions
EKP101	110v or 240v 50-60Hz	20-80 Amps	EKP105 - Spot EKP106 - Craftsman EKP107 - MIG EKP108 - Master EKP141 - TIP-C	EKP102 - EKP-50 EKP103 - ECO-kleen EKP104 - All Machine MST129 - BLITz Clean Up	9.5kgs (20.95lbs)	36 x 19 x 28



# EASYkleen Pro S-10

*Inverter technology with adjustable output control*

- Inverter driven weld cleaner that utilizes a specific output to provide superior cleaning speed
- 100% duty cycle, designed for moderate to high use on all thicknesses and grades of stainless steel
- Adjustable amperage output control ranging from 30-100amps of available cleaning power
- Cleans, passivates and polishes all in one step to save time compared with alternative methods



## Specifications

Product Code	Input	Output	Range of Brushes	Compatible Solutions	Weight	Dimensions
EKPS10-101	240v 50-60Hz	30-100 Amps	EKPRO-130 - Pro-S EKPRO-131 - Pro-M EKPRO-133 - TIP-PS	EKP102 - EKP-50 EKP103 - ECO-kleen EKP104 - All Machine MST129 - BLITz Clean Up	8.4kgs (18.5lbs)	42 x 20 x 32.5 (16.5" x 7.9" x 12.8")

# EASYkleen Pro S-15

*High performance workhorse that leaves its competitors behind*

- Powerful inverter driven weld cleaner with adjustable amperage control from 30-130amps
- Easily handles all thicknesses of stainless steel incorporating the largest dipping brushes available
- Fine power control gives this unit the ability to work on very thin gauge material through to heavy plate
- Excellent brush and solution consumable life even when working at the highest power output



## Specifications

Product Code	Input	Output	Range of Brushes	Compatible Solutions	Weight	Dimensions
EKPS15-101	110-240v 50-60Hz	30-130 Amps	EKPRO-130 - Pro-S EKPRO-131 - Pro-M EKPRO-132 - 15-40 EKPRO-133 - TIP-PS	EKP102 - EKP-50 EKP103 - ECO-kleen EKP104 - All Machine MST129 - BLITz Clean Up	9.4kgs (20.7lbs)	42 x 20 x 32.5 (16.5" x 7.9" x 12.8")

# EASYkleen EASY Feeder

*Adaptable inline solution fed  
option for a range of specific jobs*

- Optional accessory for the EASYkleen range of machines that is attached inline with the unit itself
- Turns a traditional "dipping" unit into solution fed capable machine for those jobs that require it
- Built in a robust stainless steel case incorporating the same pump technology as the mepBLITz DC-i5
- An increase of more than 50% in labour efficiency compared to using a dipping option on certain jobs



## Specifications

Product Code	Input	Output	Range of Brushes	Compatible Solutions	Weight	Dimensions (Case only)
EKEF6MM	12-35V 50-60Hz	20-80 Amps	EKEFM6STD - Soft Tip EKEFM6TIP - TIP Feeder	Same as all EASYkleen models	4.7kgs (10.4lbs)	15 x 16 x 20 (6" x 6.3" x 7.9")
EKEF8MM	12-35VDC 50-60Hz	20-130 Amps	MEP151 - Standard MEP156 - Turbo	Same as all EASYkleen models	4.7kgs (10.4lbs)	15 x 16 x 20 (6" x 6.3" x 7.9")

# mepBLITz DC-i5

*Top of the line unit with optional  
bath for full immersion of smaller parts*

- Powerful inverter driven weld cleaner with adjustable amperage control from 30-150amps
- Can be used as a solution fed, dipping or bath option depending on what the user requires
- Uses the largest brush electrodes on the market which are up to 120mm (4") in width
- Liquid cooled inverter power source provides excellent realibility for continual use all day long



## Specifications

Product Code	Input	Output	Range of Brushes	Compatible Solutions	Weight	Dimensions (Case only)
MEPi5	110-240v 50-60Hz	30-150 Amps	MEP151 - Standard MEP156 - Turbo MEP160 - TIP-B MEPi5M60 - M60 MEPi5M120 - M120	MEP153 - B-50 MST129 - BLITz Clean Up	9.4kgs (20.7lbs)	36 x 30 x 30 (14.2" x 11.8" x 11.8")

# Marking & Etching Kit

*A metal marking system that will leave a permanent imprint on your job*

- Dedicated cables used only for this process
- A very quick process to imprint your logo, part or serial number onto your desired job
- Long life stencils of your customised logo or similar with the ability to be used for over 1000+ imprints
- Personal stencilling system option that you can use to mark/etch small runs such as serial numbers



## Specifications

Product Code	Kit Includes	Optional extras	Weight	Dimensions
EK19KIT	EKEG - Electrode Guide EKHL - Etch Kit Handle and Lead EKCL - Etch Kit Clamp and Lead EKMSOL-1 - Marking Solution 1lt	EKM1PT18 - PT-18 Stencil System EKM118ST - Stencil Cartridge EKESOL-1 - Etch Solution	2.9kgs (6.6lbs)	45 x 35 x 10 (17.7" x 13.7" x 4")

# Stenciling Options

*Choose the stencil option that is suitable for your needs*

- Option 1 - Long life stencil. Good for 1000+ uses and ideal for logos and repeatable parts/codes
- You provide us your custom stencil idea and we will have it made up for you
- Option 2 - Purchase a PT-18 Stenciler and print your own stencils using the unique fibre stencil
- These stencils are ideal for shorter runs and one off imprints that may be required



## Specifications

Product Code	Kit Includes	Compatible Solutions	Weight	Dimensions
EKM1PT18	P-touch Stenciller (pictured) EKM118ST - 3m Stencil Cartridge	EKESOL - Etch Solution EKMSOL - Marking Solution	0.7kgs (1.5lbs)	8 x 15 x 14 (3.1" x 6" x 5.5")

# EASYkleen Solutions

*A range of premium solution options to cover every users individual requirements*

## EKP-50 Solution

**EKP102**

The EKP-50 Solution is a premium solution that delivers a very high speed of clean whilst producing the highest possible corrosion resistant finish available. Tuned to give maximum results with EASYKleen machines. With the ability to match and finish from 2B through to mirror, this non-toxic water based solution is the clear choice when results and time matter.



## ECO-kleen Solution

**EKP103**

The Eco-Kleen Solution is a pH neutral solution which provides the user with ultimate safety for themselves and the environment. Being pH neutral it requires no neutralization once it has been used and gives a matt finish to the product. "Non Dangerous Goods" for transport.



## All Machine Solution

**EKP104**

A water based, non dangerous goods fluid that is very economical yet fast in removing weld scale whilst being able to match any finish from 2B through to mirror. All Machine is the most affordable solution on the market that will give you a true polished finish if required, unlike most non dangerous goods solutions on the market.



## Marking Solution

**EKMSOL**

This fluid is used with the EASYkleen Marking & Etching Kit to mark stainless steel with a dark imprint that make your logos, serial numbers and the like stand out against the stainless steel parent metal.



## Etching Solution

**EKESOL**

This fluid is used with the EASYkleen Marking & Etching Kit to etch stainless steel with a frosted/white imprint that make your logos, serial numbers and the like stand out against the stainless steel parent metal.



## B-50 Solution

**MEP153**

The B-50 Solution is a premium solution that delivers a very high speed of clean whilst producing the highest possible corrosion resistant finish available. Tuned to give maximum results with the ability to match any finish from 2B through to mirror, this non-toxic water based solution is the clear choice when results and time matter.



## BLITz Clean Up Solution

**MST128**

The BLITz Clean Up neutraliser can be used after B-50, EKP-50 & All Machine weld cleaning solutions. With an inbuilt pH indicator, this neutraliser is essential if you want to make sure that all acidic residue has been completely removed from your workpiece.





# Brush Consumables

*A range of brush styles to provide the user the most effective brush for their job!*

## EASYkleen TEC Brush Options

- EKT105 - Express (Orange with sleeve)
- EKT106 - Rapid (Green)
- EKT140 - TIP-E (Orange long)



## EASYkleen Plus Brush Options

- EKP105 - Spot Brush (Yellow)
- EKP106 - Craftsman Brush (Red with sleeve)
- EKP107 - MIG Brush (Yellow/Black)
- EKP108 - Master Brush (Blue)
- EKP141 - TIP-C Brush (Red long)



## EASYkleen Pro S-10 Brush Options

- EKPRO-130 - Pro-S (Black with sleeve)
- EKPRO-131 - Pro-M (Blue/Black)
- EKPRO-133 - TIP-PS (Black long)



## EASYkleen Pro S-15 Brush Options

- EKPRO-130 - Pro-S (Black with sleeve)
- EKPRO-131 - Pro-M (Blue/Black)
- EKPRO-132 - 15-40 (Red)
- EKPRO-133 - TIP-PS (Black long)



## EASYkleen Feeder Brush Options

- EKEFM6STD - Soft Tip (red with sleeve)
- EKEFM6TIP - TIP Feeder (red long)
- MEP151 - Standard (Blue with sleeve)
- MEP156 - Turbo (Green)
- MEP160 - TIP-B (Blue long)



## mepBLITz Brush Options

- MEP151 - Standard (Blue with sleeve)
- MEP156 - Turbo (Green)
- MEP160 - TIP-B (Blue long)
- MEPi5M60 - M60 (SS shorter)
- MEPi5M120 - M120 (SS longer)





*The experts in weld cleaning*



For more information on EASYkleen's range of market leading weld cleaners and their consumables, please contact us via one of the options below, or visit the where to buy tab on our website to find a local distributor near you.

**EASYkleen Pty Ltd**

**43 Shelley Road, Moruya, NSW, 2537, Australia**

**Ph: +612 4474 3394**

**Web: [www.easykleen.com.au](http://www.easykleen.com.au)**

**Email: [sales@easykleen.com.au](mailto:sales@easykleen.com.au)**